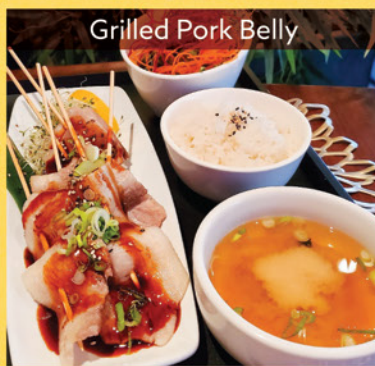
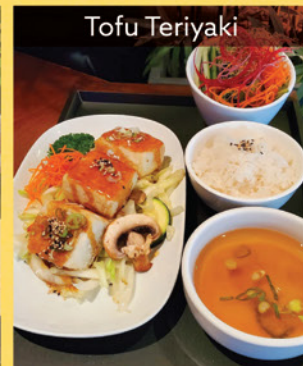


# TEISHOKU Lunch Special Meal Set

\* Comes with rice, miso soup, and salad.

Chicken Teriyaki	16.99
Beef Teriyaki	16.99
Tofu Teriyaki	16.99
Chicken Karagge	16.99
Chicken Katsu	16.99
Ebi & Croquette Fry	16.99
Grilled Salmon Belly	14.99
Grilled Salmon Kama	14.99
Grilled Spicy Pork Belly	15.99
Grilled Pork Belly	15.99
Tempura 6pcs 2 prawn, 2 yam, 2 veggie	15.99
Assorted Sashimi 8pcs 2 tuna, 2 salmon, 2 hamachi, 1 hotate, 1 ika	26.99
Curry Rice with Fried Onion	15.99
Chicken Katsu Curry	18.99
Beef Curry	18.99
Croquette Curry	17.99



**Build Your  
Own Noodle**



**BYON COMBO**

**\$19.99**

\* Pick one from each section in order to build your own noodle combo meal.



<p><b>Step 1</b></p> <ul style="list-style-type: none"> <li>Deep Fried Gyoza 3pcs</li> <li>Deep Fried Veggie Gyoza 3pcs</li> <li>Agedashi Tofu 3pcs</li> <li>Spicy Agedashi Tofu 3pcs</li> <li>Chicken Karaage 3pcs</li> </ul>	<p><b>Step 2</b></p> <ul style="list-style-type: none"> <li>Udon: choice of Tempura / Chicken / Beef / Veggie</li> <li>Yakisoba: choice of Chicken / Beef / Veggie</li> </ul>
<p><b>Step 3</b></p> <ul style="list-style-type: none"> <li>BC Roll 3pcs</li> <li>California Roll 3pcs</li> <li>Yam Tempura Roll 3pcs</li> <li>Avocado Roll 3pcs</li> <li>Tamago Roll 3pcs</li> </ul>	<p><b>Step 4</b></p> <ul style="list-style-type: none"> <li>Inari Cone</li> <li>Tuna Cone</li> <li>Salmon Cone</li> <li>Spicy Tuna Cone</li> <li>Spicy Salmon Cone</li> </ul>